

Blunt traumatic mammary hematoma as part of a seatbelt syndrome

Published on 12.08.2001

DOI: 10.1594/EURORAD/CASE.542

ISSN: 1563-4086

Section: Breast imaging

Imaging Technique: Ultrasound

Case Type: Clinical Cases

Authors: M. Wintermark, P. Schnyder

Patient: 50 years, female

Clinical History:

High-speed car accident with a seatbelt syndrome

Imaging Findings:

A 50-year-old female sustained a seatbelt injury in a high-speed traffic accident. Clinical presentation included a hematoma in her right breast. Figure 1 shows the mammographic findings.

Discussion:

The hematoma in the right breast is demonstrated on mammography as a large mass. Seatbelt syndrome includes thoracic injuries resulting from the deceleration against the seatbelt. Clinical features of this syndrome include mammary hematomas, clavicle fractures, rib fractures and flail chest, sternal fractures, bilateral lung lesions, cardiac injuries, aortic injuries, liver and spleen lesions and thoracic spine fractures.

Differential Diagnosis List: Blunt traumatic mammary hematoma as part of a seatbelt syndrome

Final Diagnosis: Blunt traumatic mammary hematoma as part of a seatbelt syndrome

References:

DiPiro PJ, Meyer JE, Frenna TH, et al (1995)

Seat belt injuries of the breast: findings on mammography and sonography.

AJR 164: 317-320. (PMID: [7839961](#))

Kaplan PA, Anderson JC, Norris MA, et al (1989)

Ultrasonography of post-traumatic soft-tissue lesions.

Radiol Clin North Am 27: 973-982. (PMID: [2672084](#))

Melanson SW, Heller M (1998)

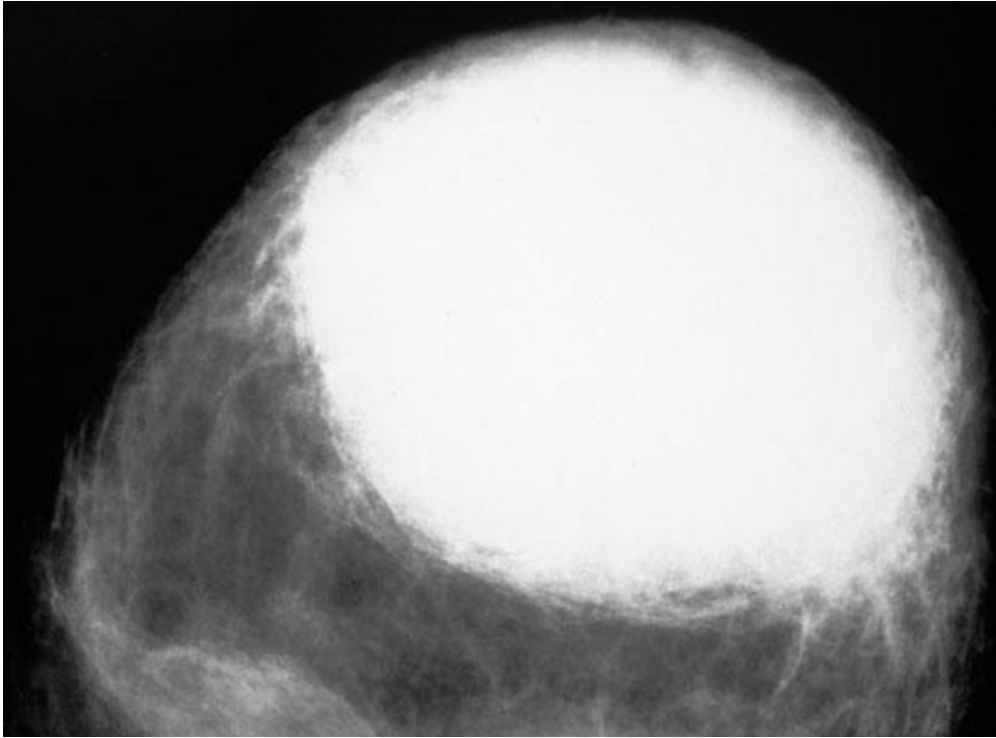
The emerging role of bedside ultrasonography in trauma care.

Emerg Med Clin North Am 16: 165-189. (PMID: [9496320](#))

Wintermark M, Schnyder P (2000) Trauma of the chest wall. In Schnyder P, Wintermark M. Radiology of blunt trauma of the chest. Springer, Berlin Heidelberg New York, pp 9-27.

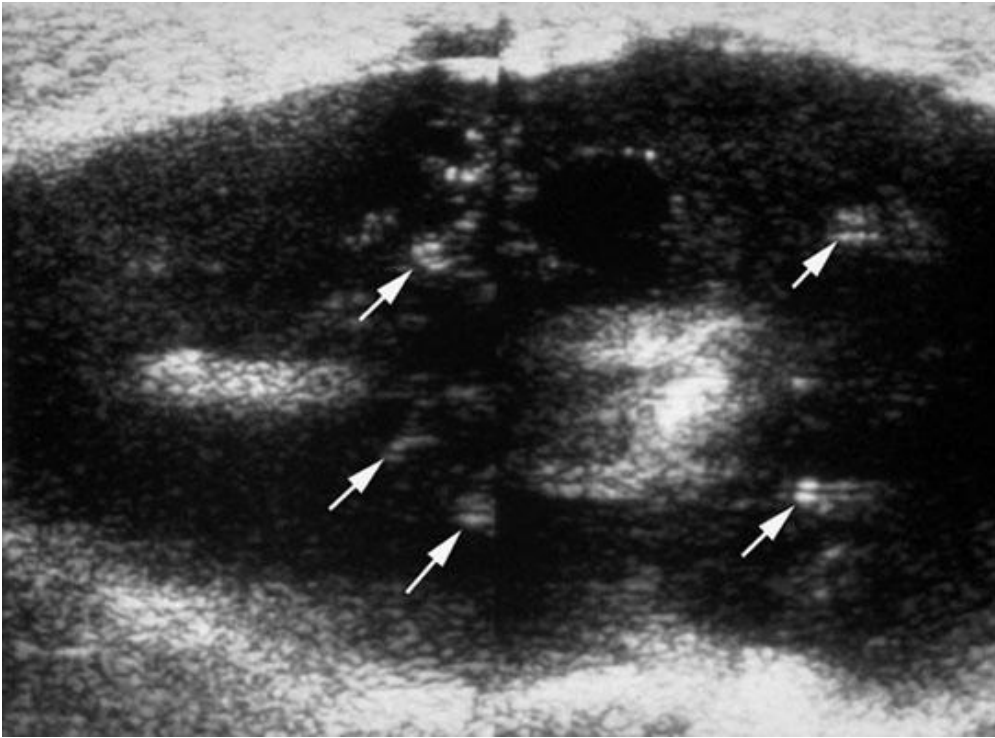
Figure 1

a



Description: Blunt traumatic mammary hematoma demonstrated by mammography (From Wintermark M, Schnyder P (2000) Trauma of the chest wall. In Schnyder P, Wintermark M. Radiology of blunt trauma of the chest. Springer, Berlin Heidelberg New York, pp 9-27) **Origin:**

b



Description: Blunt traumatic mammary hematoma - Blunt traumatic mammary hematoma displayed by ultrasonography, which displays blood clots within the collection as well as the echo patterns of a 12F-drain (arrows) (From Wintermark M, Schnyder P (2000) Trauma of the chest wall. In Schnyder P, Wintermark M. Radiology of blunt trauma of the chest. Springer, Berlin Heidelberg New York, pp 9-27)

Origin: